



INDOFINE Chemical Company, Inc.

121 Stryker Lane, Bldg. 30, Suite 1 • Hillsborough, NJ 08844 • U.S.A.

Phone: (908) 359-6778 • FAX: (908) 359-1179

website: www.indofinechemical.com

e-mail: chemical@indofinechemical.com

CERTIFICATE OF ANALYSIS

Catalog Number: 06-636

Product Name: **GINSENOSIDE Rh2**

CAS Number: [78214-33-2]

Lot Number: 2012496

Chemical Formula: C₃₆H₆₂O₈

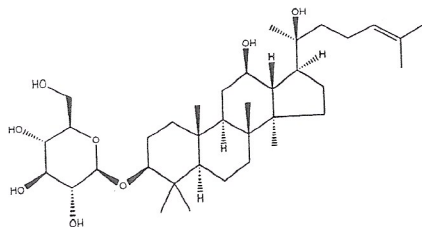
Molecular Weight: 622.88

Appearance: Off-white powder

Water Content: 0.99%

Storage: Store in a cool, dry place

Purity(HPLC): 99.74%



Prepared by:
Ramesh Mandadi
Ramesh Mandadi
Director of Operations

Reviewed and Approved by:
Sujata Moton
Sujata Moton
VP



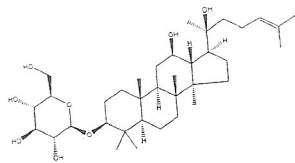
INDOFINE Chemical Company, Inc.

121 Stryker Lane, Bldg. 30, Suite 1 • Hillsborough, NJ 08844 • U.S.A.

Phone: (908) 359-6778 • FAX: (908) 359-1179

website: www.indofinechemical.com

e-mail: chemical@indofinechemical.com



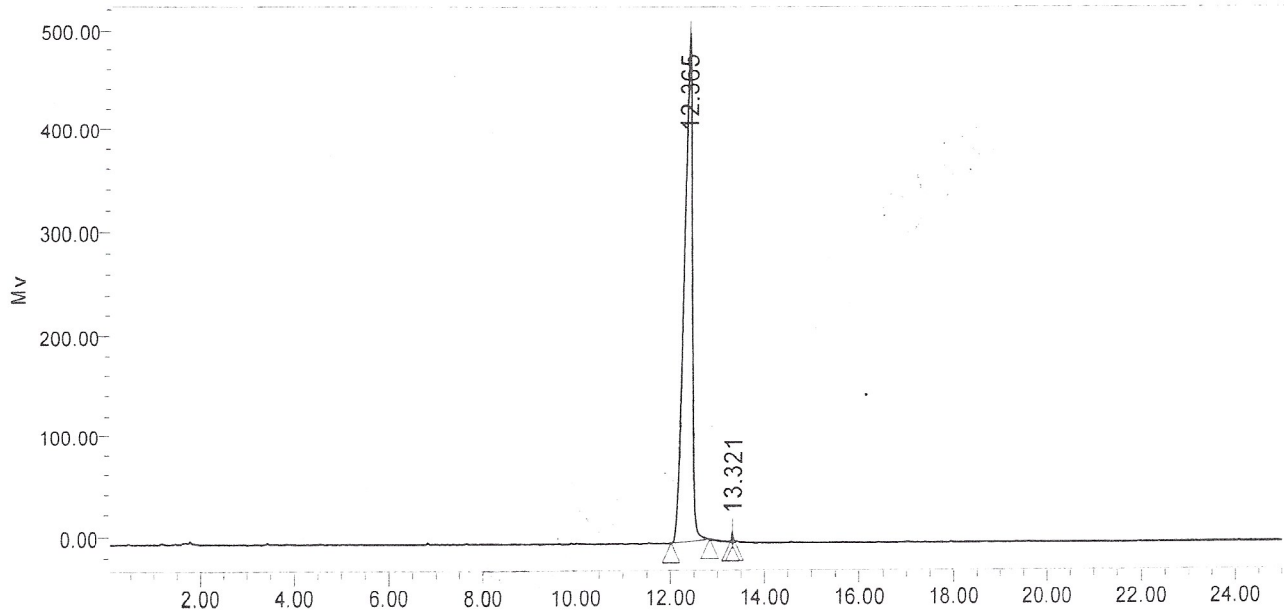
HPLC ANALYSIS

Catalog No.: 06-636
Product Name: Ginsenoside Rh2
Lot No.: 2012496

SAMPLE INFORMATION

Sample Name:	Ginsenoside RH2	Acquired By:	prf01
Sample Type:		Sample Set Name:	
Vial:	23	Acq. Method Set:	Ginsenoside RH2
Injection #:	1	Processing Method:	sample
Injection Volume:	20.00 ul	Channel Name:	SATIN
Run Time:	25.0 Minutes	Proc. Chnl. Descr.:	

Auto-Scaled Chromatogram



Peak Results

Name	RT	Area	% Area	USP Plate Count	USP Resolution
1	12.365	5735838	99.74	24260.78	
2	13.321	15089	0.26	920810.10	4.96

Prepared by:
Ramesh Mandadi
Ramesh Mandadi
Director of Operations

Reviewed and Approved by:
Sujata Moton
Sujata Moton
VP